



IKAMCO

MEHVARSAZAN



MEHVARSAZAN

IRANKHODRO



Automobile AXLE

Designer & Producer



IKAMCO HISTORY

HISTORY

Established in Tehran under registration no 9643 and with initial capital of 60 million Rials (US \$ 750000) in 1964 ' the company started its operation in 1966. According to primary constitution, the company's main activity was to produce and assemble bus and minibus, due to which it was called Autobus Sazan Iran. Later on, the company's name was changed to MehvarSazan Manufacturing Co . After acquisition of the majority of company's Stocks by Gostaresh Sarmayegozari Iran Khodro Co. (A subsidiary of Iran Khodro Group), the company's eventual name is now: SHERKAT SANATI MEHVAR SAZAN IRAN KHODRO.

The Company has been actively present in Tehran Stock Exchange market since 1995. Along with establishment of Axle design and research centre , the company received ISO/TS 16949 , quality assurance certificate ' in 2001' which was upgraded to ISO/TS16949:2002 in 2004 ;just to further assure its customers with all its products . The company's products have been varied from paykan rear Axle in 1996 to front and rear Axles ,components and spare parts of other light vehicles in 2002.(mainly Peugeot group)

PRODUCTS

Company's product was limited to Busses till 1973 and from then on , till 1995 ' it has produced various Fiat & Iveco minibuses.

With installation of required machineries ' imported from TALBOT ENGLAND in 1996, the production shifted up from initial annual production of 40000 paykan rear Axle in 1989 to more than 300000 pairs of various Axles (Front and Rear) in 2004.

Amongst the present variety of Front and Rear Axles, products of the Company includes Axles for Samand, Peugeot206, Peugeot 405,Pars and RD.

COMPANY'S PROPERTIES

Company's Sites

Two sites are located close to each other. Site no.1 has been allocated to the production of Paykan , RD, Peugeot 405 ,Samand and pars Axles.

Site no.2 has been allocated to the production of peugeot 206 Axles.

Machineries

Company possesses various production lines ' the newest of which are Differential Head and Diff Box production lines. The company also benefits from a sophisticated CNC measuring machine.

In total , at the present time ' the company owns 460 machines of various types and nature.

MEHVARSAZAN

IRANKHODRO

Automobile AXLE Designer & Producer



SAMAND



MEHVARSAZAN
IRANKHODRO



WWW.IKAMCO.COM



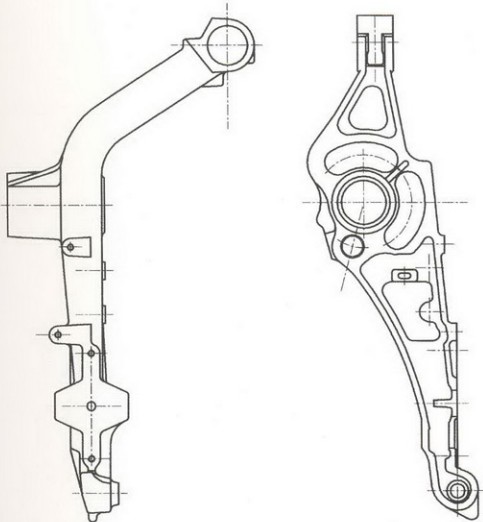
IKAMCO

RR RH Side Member



Specification

Operation	Cast + Machining	Material	Ductile Iron
Weight (kg)	8.250	Part No.	9600778380





MEHVARSAZAN

IRANKHODRO



WWW.IKAMCO.COM



Automobile AXLE

Designer & Producer



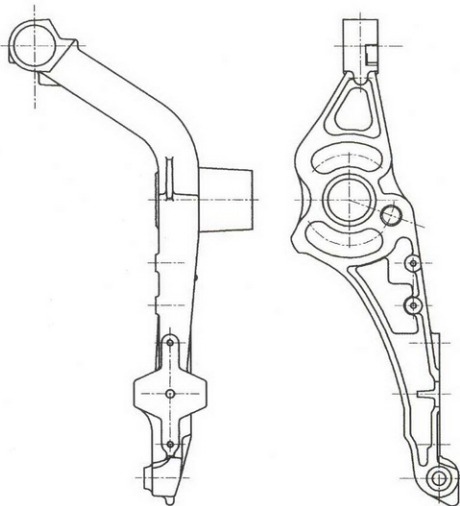


I K A M C O

RR LH Side Member



Specification			
Operation	Cast + Machining	Material	Ductile Iron
Weight (kg)	8.250	Part No.	9600778480





MEHVARSAZAN

IRANKHODRO

WWW.IKAMCO.COM



Automobile AXLE
Designer & Producer



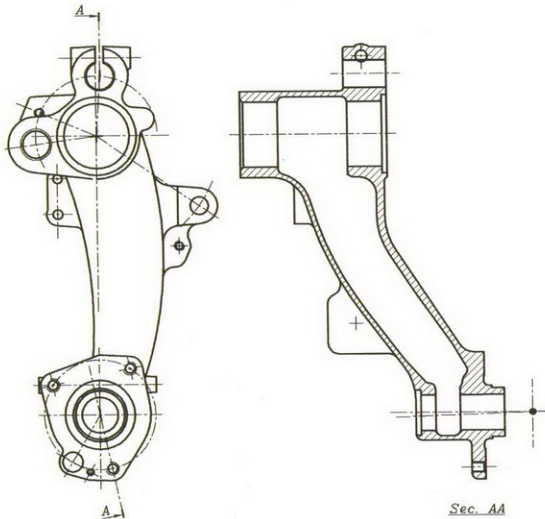
IKAMCO

RR RH Suspension Arm



Specification

Operation	Cast + Machining	Material	Ductile Iron
Weight (kg)	7.350	Part No.	9634828280





MEHVARSAZAN

I R A N K H O D R O



Automobile AXLE Designer & Manufacturer



WWW.IKAMCO.COM

© 2006 Design&Print:CHESHMANDAZ.Net 0912 380 10 28

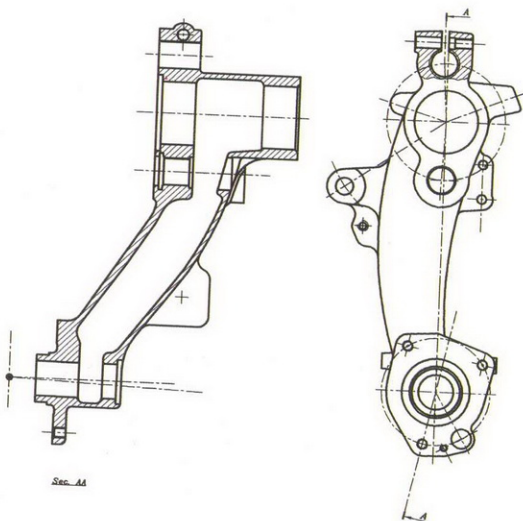


IKAMCO

RR LH Suspension Arm



Specification			
Operation	Cast + Machining	Material	Ductile Iron
Weight (kg)	7.350	Part No.	9634828080





MEHVARSAZAN

I R A N K H O D R O



Automobile AXLE Designer & Manufacturer

WWW.IKAMCO.COM





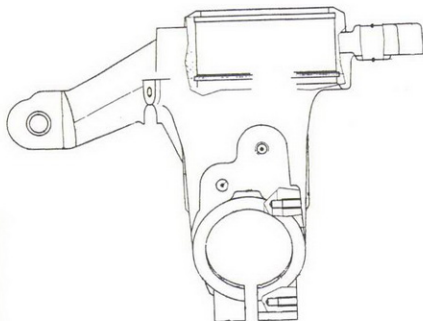
IKAMCO

Front RH Pivot Suspension



Specification

Operation	Cast + Machining	Material	Ductile Iron
Weight (kg)	4.840	Part No.	9611892180





MEHVARSAZAN

MEHVARSAZANI RANKHODRO



SAMAND

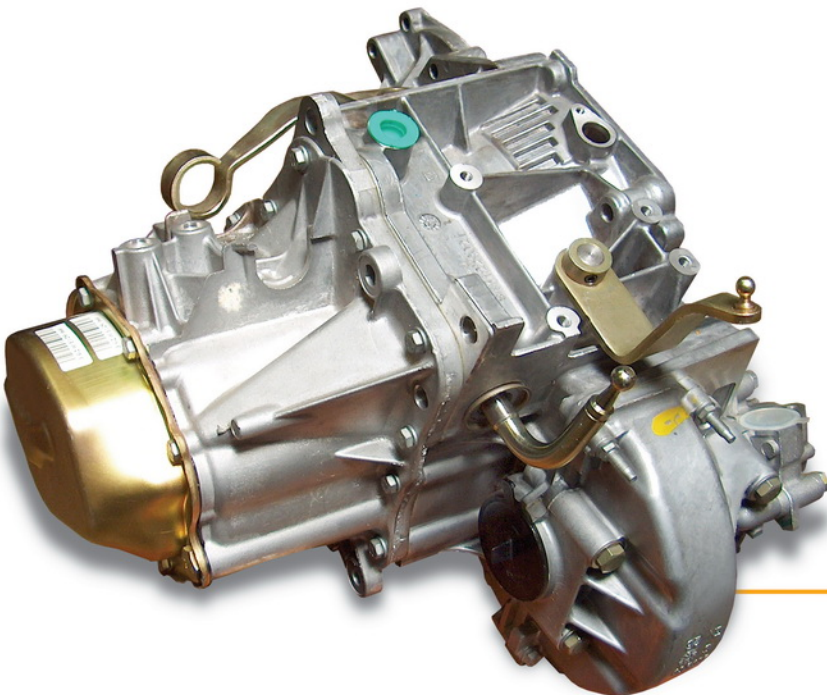


PEUGEOT

Automobile AXLE Designer & Manufacturer



WWW.IKAMCO.COM



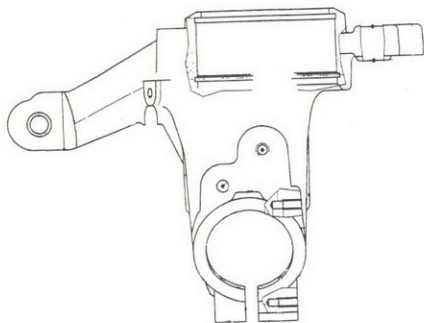


IKAMCO

Front RH Pivot Suspension



Specification			
Operation	Cast + Machining	Material	Ductile Iron
Weight (kg)	4.840	Part No.	9611892180





MEHVARSAZAN

IRANKHODRO



IKAMCO

Automobile AXLE Designer & Manufacturer



Rearbox

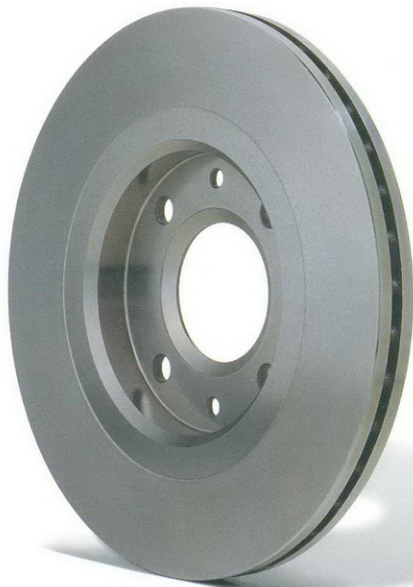
WWW.IKAMCO.COM

© 2006 Design&Print:CHESHMANDAZ.Net 0912 380 10 28



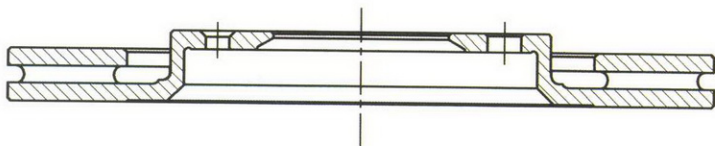
IKAMCO

Front Brake Disk



Specification

Operation	Cast + Machining	Material	Gray Cast Iron
Weight (kg)	4.780	Part No.	9640403380





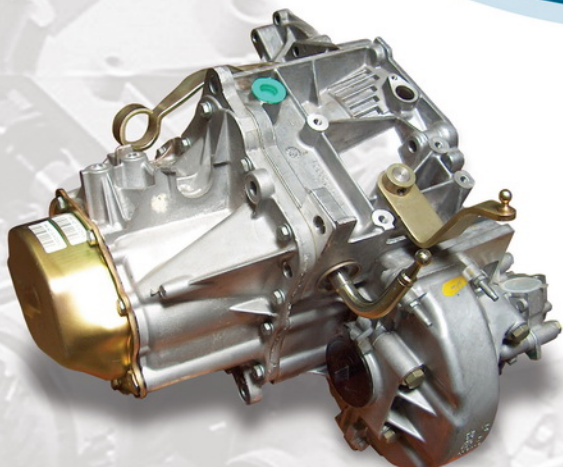
MEHVARSAZAN

I R A N K H O D R O



Automobile AXLE Designer & Manufacturer

WWW.IKAMCO.COM



© 2006 Design&Print.CHESHMANDAZ.Net 0912 380 10 28



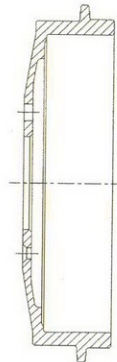
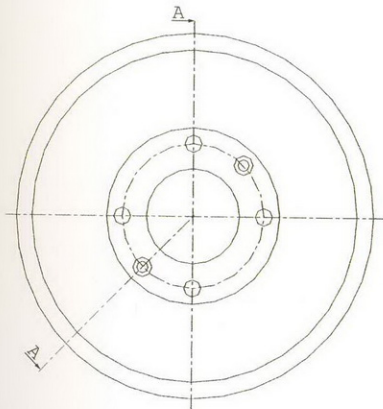
IKAMCO

RR Brake Drum



Specification

Operation	Cast + Machining	Material	Gray Cast Iron
Weight (kg)	5.805	Part No.	9150990880



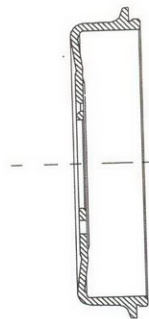
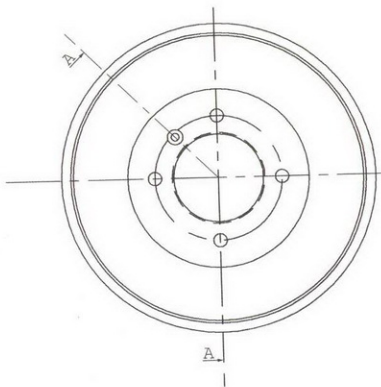


IKAMCO

Brake Drum



Specification			
Operation	Cast + Machining	Material	Gray Cast Iron
Weight (kg)	4.380	Part No.	71269308



SECTION 'A-A'



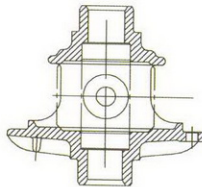
Differential Box

IKAMCO

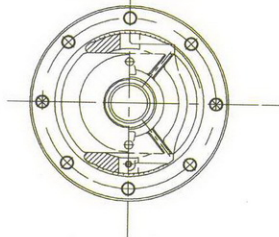
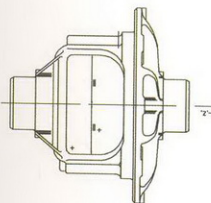


Specification

Specification			
Operation	Cast + Machining	Material	Ductile Iron
Weight (kg)	2.760	Part No.	71200402



PART SECTION B-B



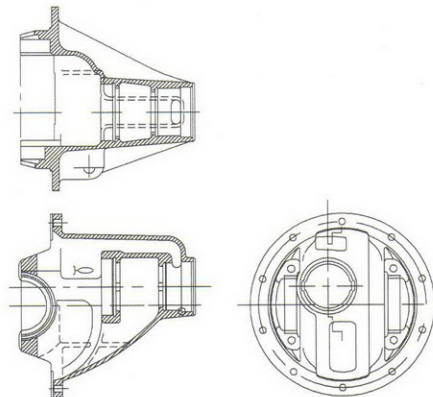


IKAMCO

Differential Housing



Specification			
Operation	Casting + Machining	Material	Gray Cast Iron
Weight (kg)	6.142	Part No.	71237722





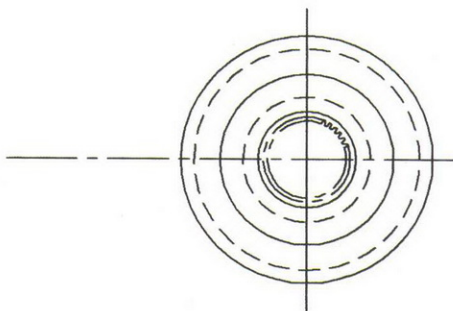
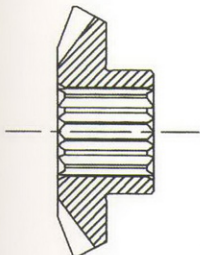
IKAMCO

Diff Bevel Wheel



Specification

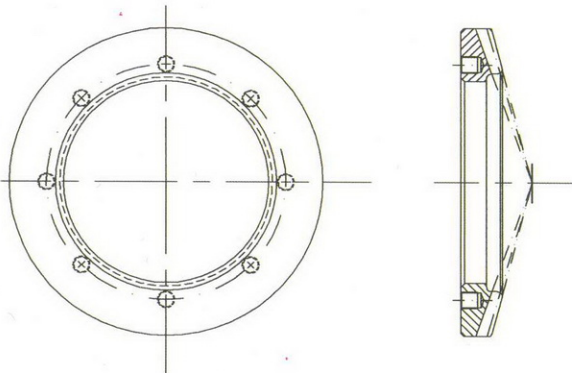
Operation	Forge + Machining + Heat Treatment	Material	Steel
Weight (kg)	0.350	Part No.	71214485



Crown Wheel



Specification			
Operation	Forge + Machining + Heat Treatment	Gear Ratio	3.89:1
Weight (kg)	1.625	Part No.	71200405





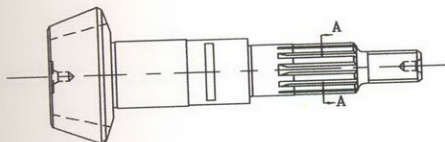
IKAMCO

Hypoid Pinion



Specification

Operation	Forge + Machining + Heat Treatment	Gear Ratio	3.89:1
Weight (kg)	1.285	Part No.	71228735



SECTION A-A

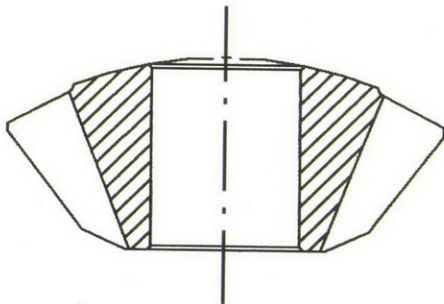


IKAMCO

Diff Bevel Pinion



Specification			
Operation	Bar + Machining + Heat Treatment	Material	Steel
Weight (kg)	0.085	Part No.	P - 83981





IKAMCO

Torsion Bar



Specification			
Operation	Forge + Machining + Heat Treatment	Material	Steel
Weight (kg)	2.565	Part No.	9153611280



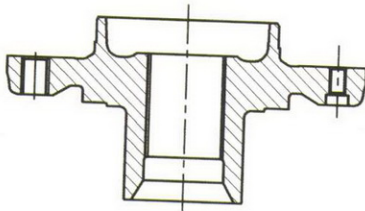


IKAMCO

Front Road Wheel Hub



Specification			
Operation	Forge + Machining	Material	Steel
Weight (kg)	1.650	Part No.	9625781480



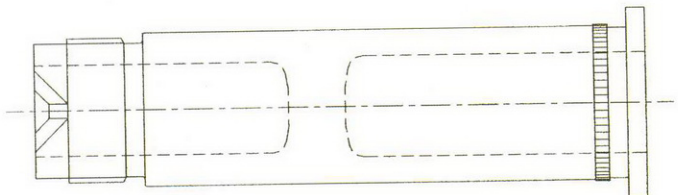


IKAMCO

RR Axle Neck



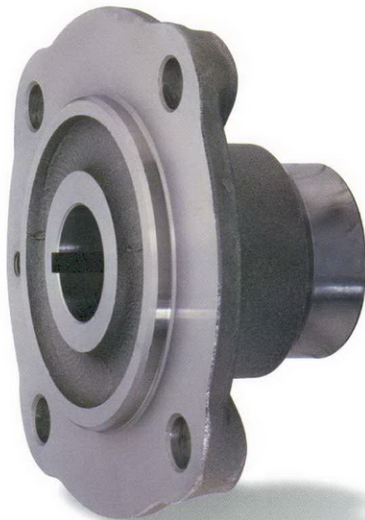
Specification			
Operation	Forge + Machining	Material	Steel
Weight (kg)	0.515	Part No.	9103040680





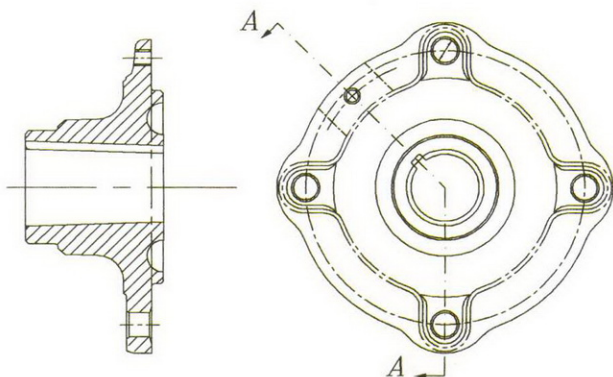
IKAMCO

Hub - Rear Axle



Specification

Operation	Forge + Machining	Material	Steel
Weight (kg)	1.395	Part No.	71239806





IKAMCO

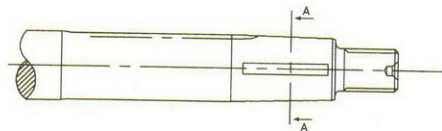
Axle Shaft



Specification			
Operation	Bar + Machining + Heat Treatment	Material	Steel
Weight (kg)	3.735	Part No.	71237717



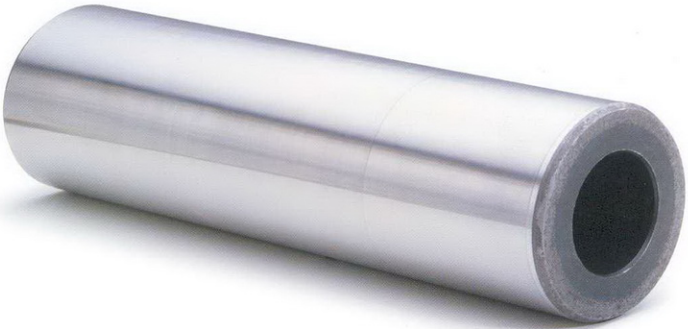
SECTION A-A



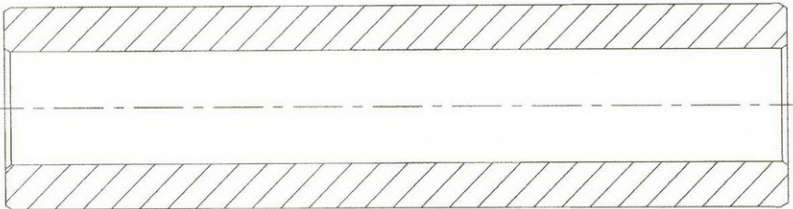


IKAMCO

RR RH Suspension Articulation Pin



Specification			
Operation	Seamless tube + Machining + Heat treatment	Material	Steel
Weight (kg)	2.080	Part No.	9616133880



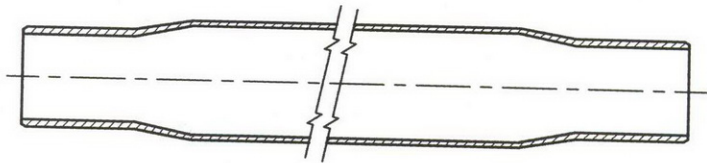


IKAMCO

RR Cross Member Body

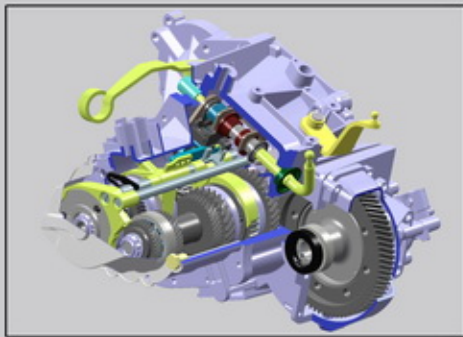


Specification			
Operation	Swaging+Machining	Material	Steel
Weight (kg)	3.750	Part No.	9153624980

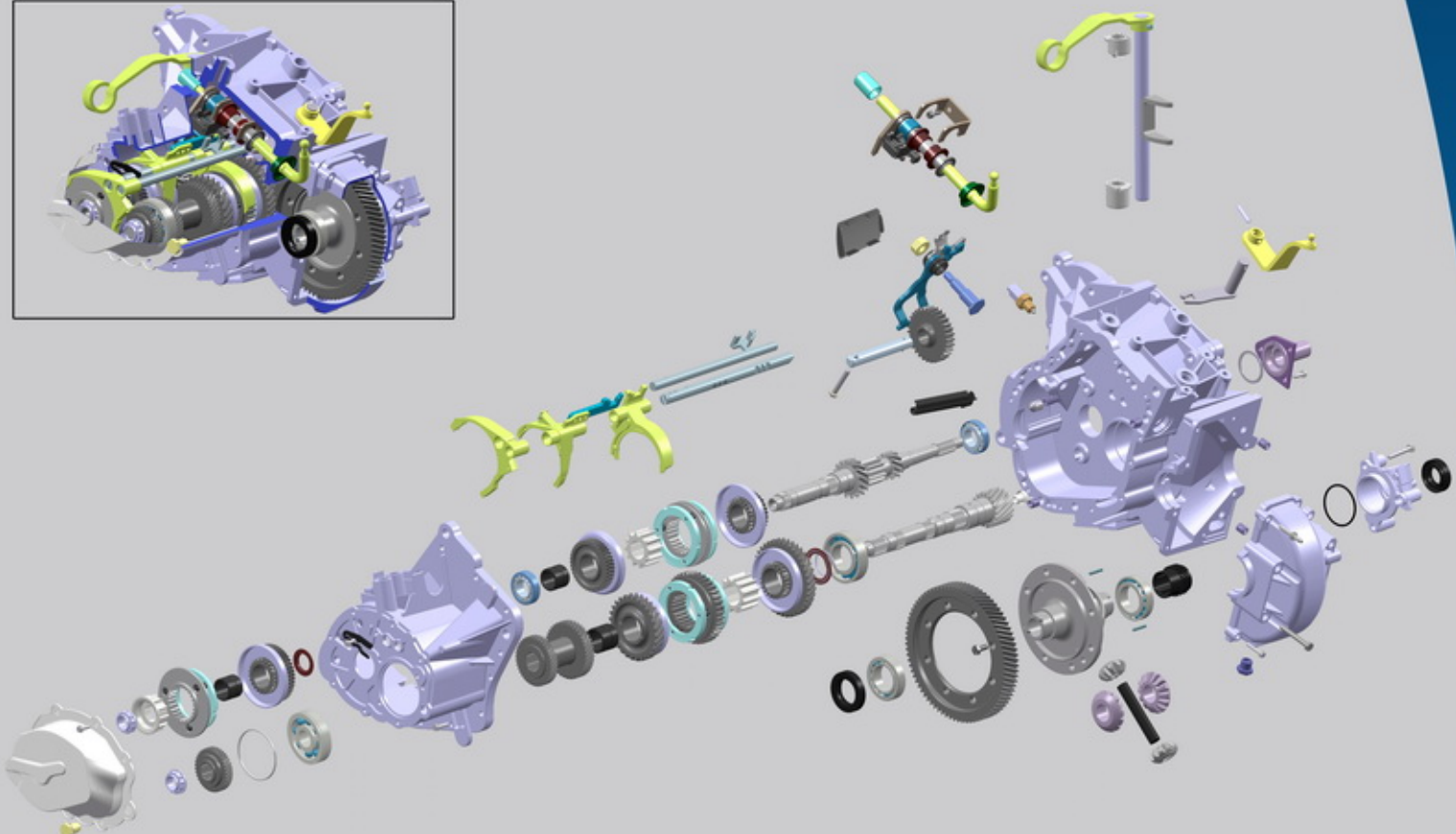


تهران - کیلومتر ۱۰ جاده مخصوص کرج
صندوق پستی: ۱۳۴۴۵/۶۵۶
تلفن: ۰۲۵-۴۹۴۴-۵
دورنویس: ۰۲۵-۴۶۹۶

10th Km.makhsosKaraj Road
Tehran-IRAN
P.O.Box: 13445/656
Tel+9821 4504944-5
Fax+9821 4504696
www.ikamco.com
Email:MEHVARSAZAN@IKAMCO.COM



PEUGEOT 405 GEARBOX



EXPLODED VIEW OF PEUGEOT 405 GEARBOX BE 3/5 - IKAMCO PRODUCT DESIGN & RESEARCH DEPT. - FEBRUARY 2005



GEAR TRAIN ASSEMBLY



PRIMARY SHAFT ASSEMBLY



SECONDARY SHAFT ASSEMBLY



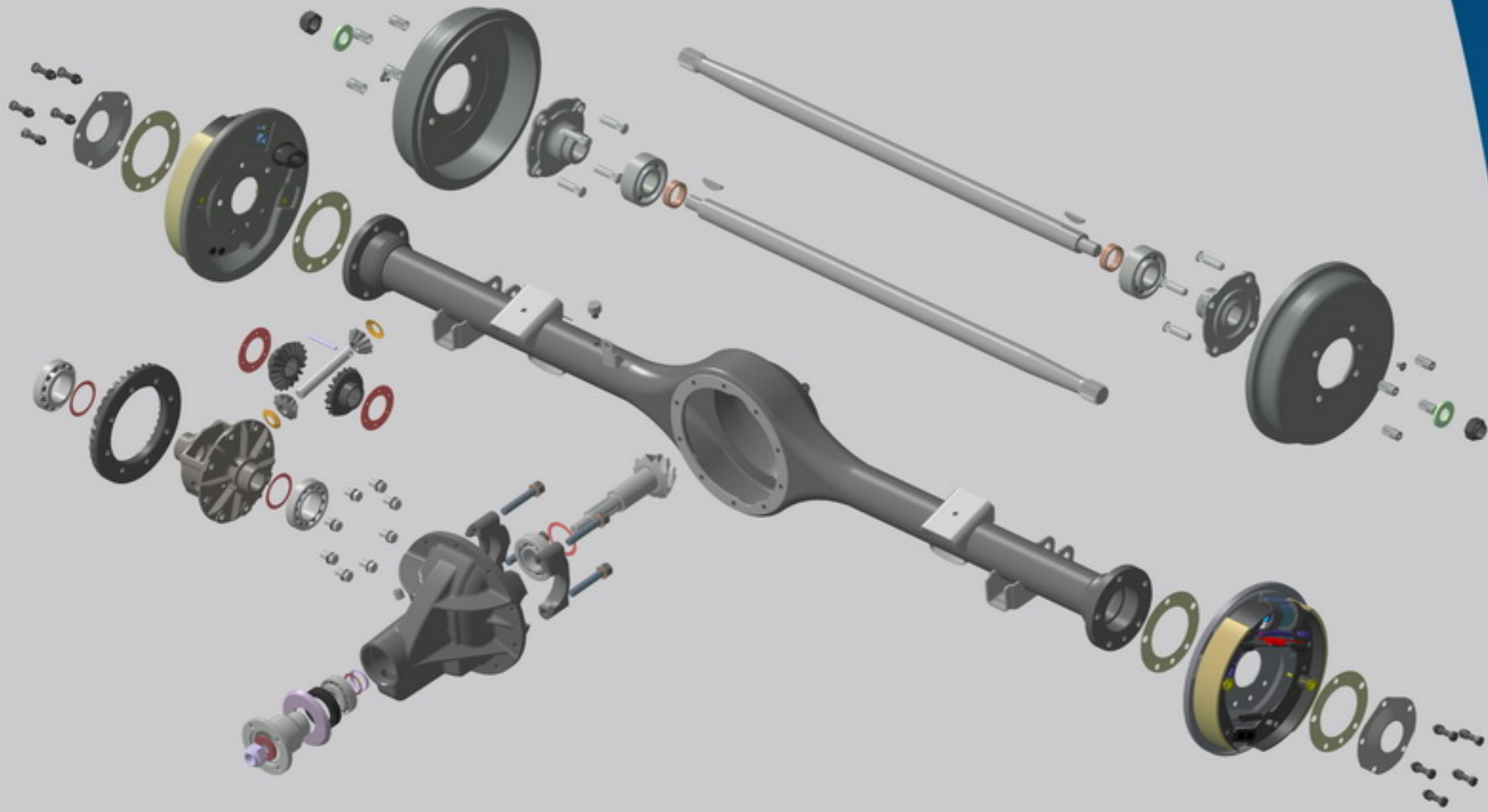
DIFFERENTIAL HOUSING ASSEMBLY

MEHVARSAZAN
PRODUCT
DESIGN & RESEARCH
CENTER



IKAMCO

PEUGEOT RD REAR AXLE



EXPLODED VIEW OF PEUGEOT RD REAR AXLE - IKAMCO PRODUCT DESIGN AND RESEARCH DEPT. - SEPTEMBER 2003



REAR AXLE ASSEMBLY



BRAKE DRUM ASSEMBLY



DIFFERENTIAL BOX ASSEMBLY



DIFF. HOUSING ASSEMBLY SECTION

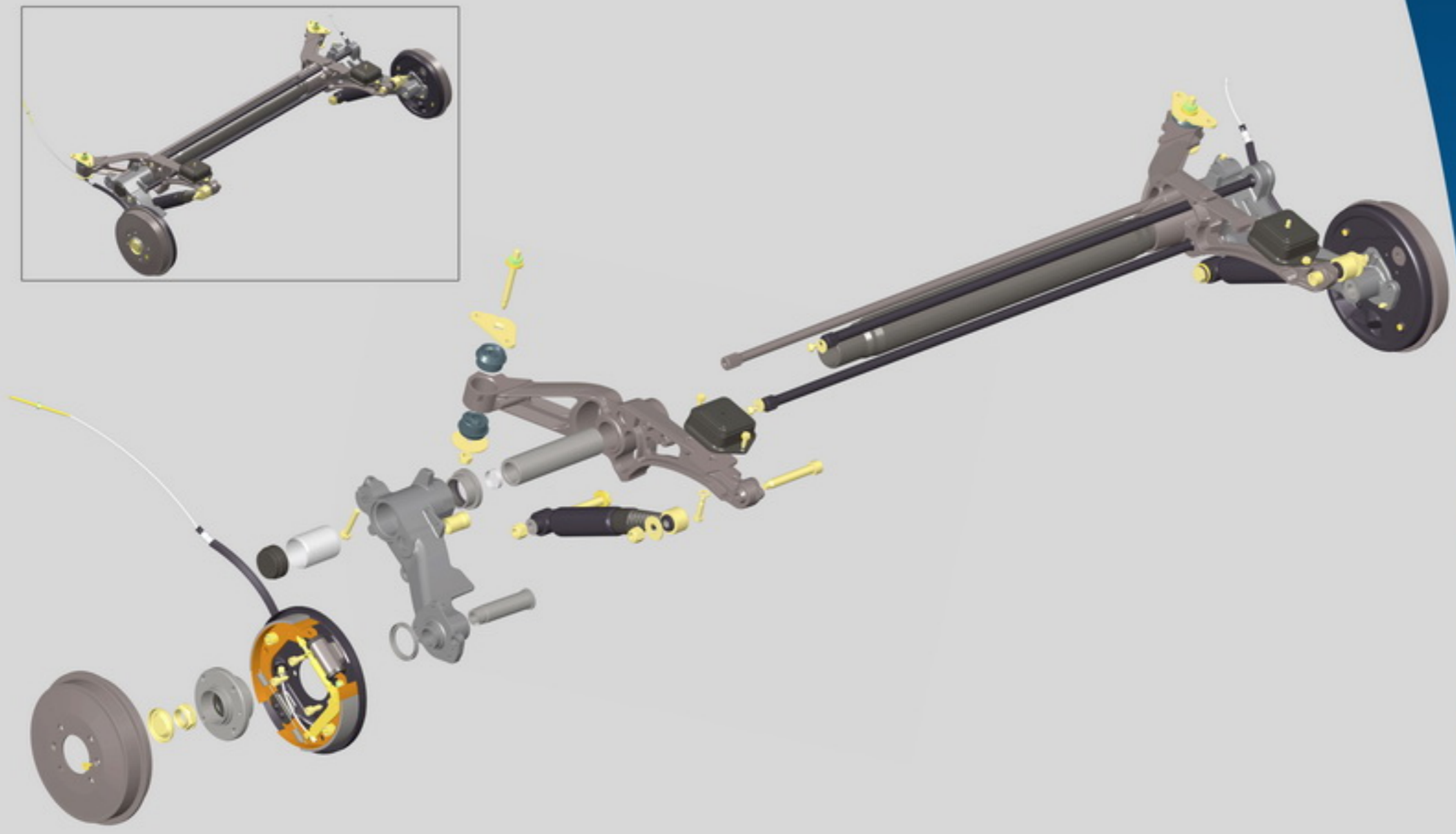
MEHVARSAZAN
PRODUCT
DESIGN & RESEARCH
CENTER



IKAMCO

PEUGEOT 405 REAR AXLE

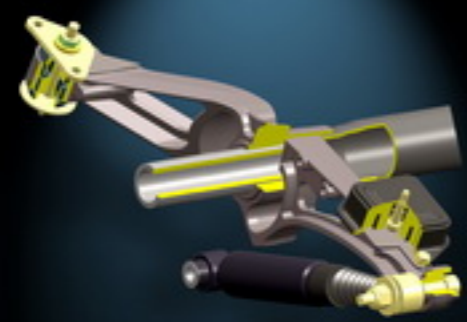
MEHVARSAZAN
PRODUCT
DESIGN & RESEARCH
CENTER



EXPLODED VIEW OF PEUGEOT 405 REAR AXLE - IKAMCO PRODUCT DESIGN AND RESEARCH DEPT. - DECEMBER 2005



SECTION VIEW OF AXLE



SECTION VIEW OF AXLE



SECTION VIEW OF AXLE



BRAKE ASSEMBLY